

C/S Nordkabel

Callsign LGRY, IMO 6930544

Owner Baltic Offshore
Year Buildt 1969/1989/2004
Type Cable Installation and Repair Vessel
Flag Norwegian

Vessel Main Data

GRT	406	Height	17 m
LOA	44 m	Service speed	9 knots
Breadth	8 m	Accommodation	9 single cabins. 2 two-man cabins
Max. draught	3,5 m		

Machinery

Main engine type Wichmann ACAT 650 bhp, controlled pitch propeller

Auxiliary engines 2x Volvo Penta, 40 kVA
Mitsubishi 1000 bhp w/pumps for thrusters / 250 kVA

Thrusters Brunvoll Forward and Aft Thrusters

Electrical supply 220V 50Hz AC / 24VDC

Uninterrupted power supply 3 kVA

Navigation equipment

DGPS Furuno GP-50 Mark 3

Echo Sounder Furuno FCV-295

Radar Furuno FAR-2xx8 / JRC JMA-3400

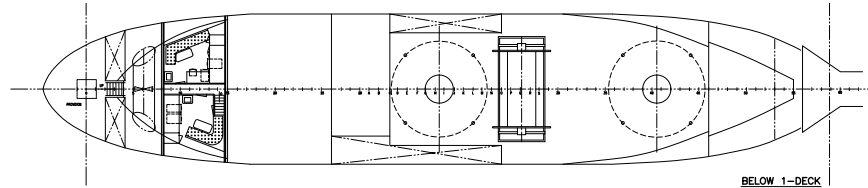
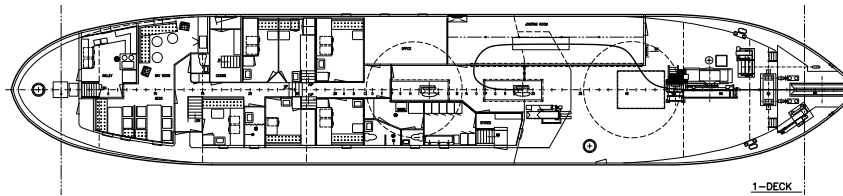
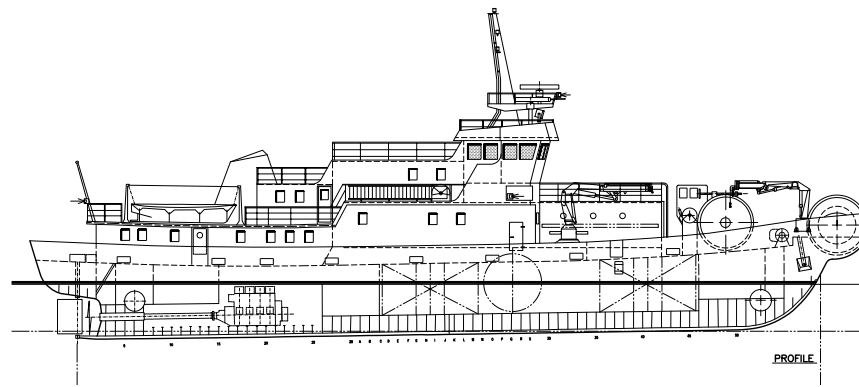
Gyro compass Anshutz Standard 20 gyro compass with GPS aiding

DP system Undheim JPOS

ECDIS Dual TELKO TECDIS with Navtor NavBox for chart corrections

Satellite phone Iridium

Satellite internet Starlink



Cable stowage

2 cable holds

Diameter 5 m

Coiling depth 3 m

Total capacity 80 tonnes

Cable handling system

Hydraulic cable winch 7 tonnes

Cable reel 3,0 m diameter

Cranes

Forecastle, PS Palfinger, 8 tonnes/m

Maindeck, SB IronFist, 22 tonnes/m

Survey equipment

Prepared with mount for underwater positioning and hoist for multibeam echosounder